

COVID-19 Epidemiology Surveillance Program
Monthly COVID-19 Report: December 2023
MMWR Week #48 – 1, Nov. 26, 2023–Jan. 6, 2024

Division of Epidemiology & Public Health Preparedness (EPHP) 775-328-2447

Adam Vazquez, MPH, COVID-19 Epidemiologist AVazquez@nnph.org

Lissa Callahan, COVID-19 Statistician LCallahan@nnph.org

Weekly Summary*

Metrics	MMWR Week 48	MMWR Week 49	MMWR Week 50	MMWR Week 51	MMWR Week 52	MMWR Week 1
Number of New Cases	191	172	215	237	247	209
New Cases per 100,000 Population	38	35	43	48	50	42
Hospitalizations**	27	20	23	26	35	21
Deaths**	4	4	0	1	1	1

*For definition and specifics on metrics summarized, please refer to corresponding sections.

**Note: hospitalization and death totals for each week are subject to change as new reports are received on a daily basis and are often delayed, causing underreporting in more recent MMWR weeks.

Key Message(s)

- The number of cases reported in Washoe County increased from 38 new cases per 100,000 population in MMWR week 48 to 50 new cases per 100,000 population in MMWR week 52, and then decreased to 42 new cases per 100,000 population in MMWR week 1.

COVID-19 Case Information

Figure 1. Rate of New Cases Reported by MMWR Week, Washoe County and Nevada, 2023-2024

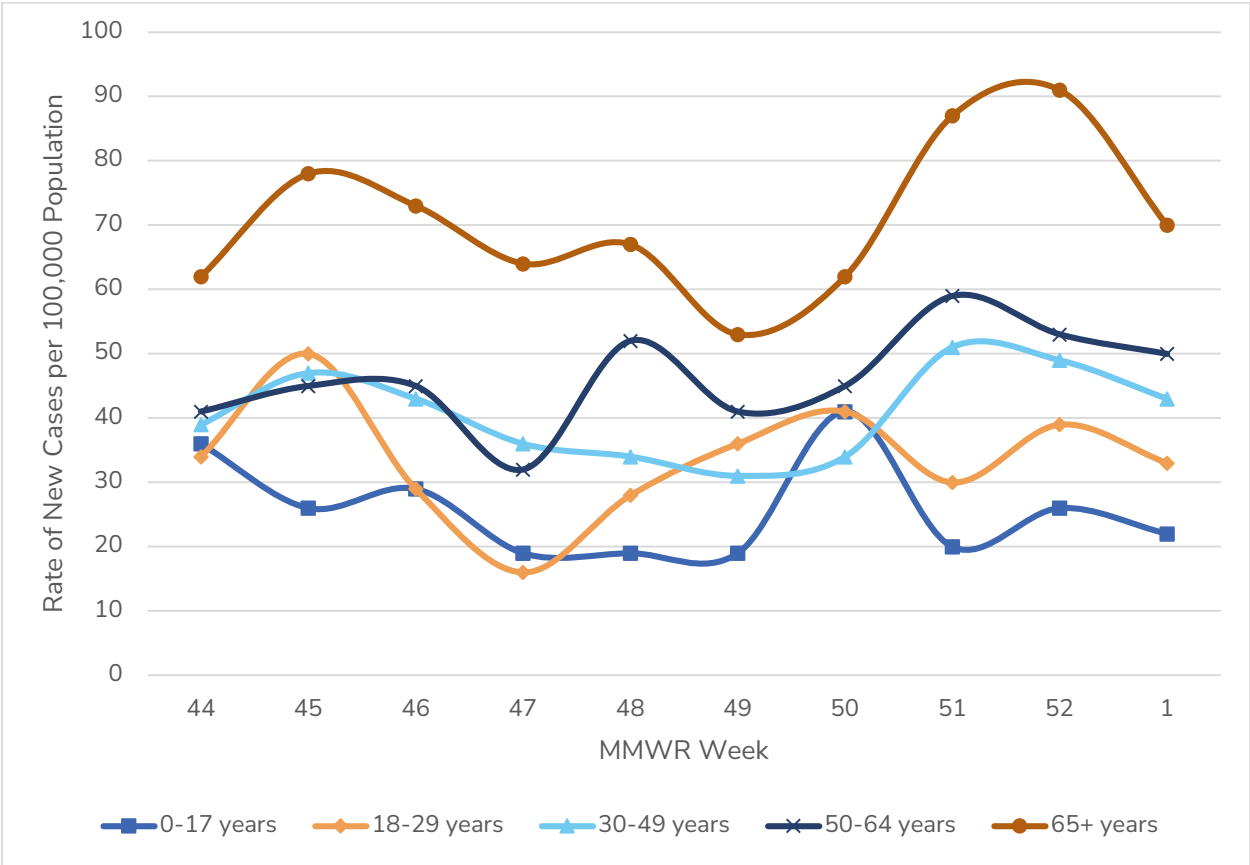


*Data source: Internal, NNPH

**Data Source: <https://nvhealthresponse.nv.gov/#covid-data-tracker>

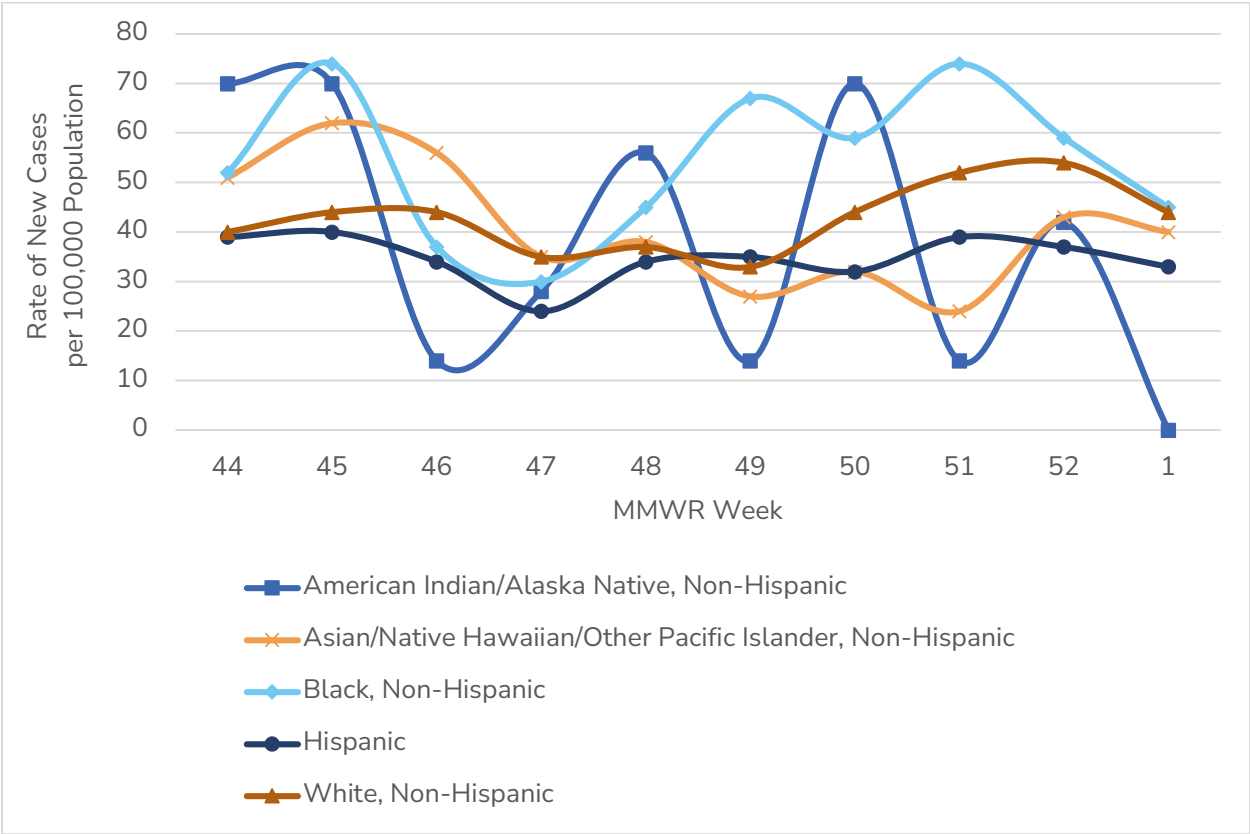
- In Washoe County, case counts increased from a ten-week low of 33 new cases per 100,000 population in MMWR week 47 to 50 new cases per 100,000 population in MMWR week 52, then decreased to 42 new cases per 100,000 population in MMWR week 1.
- In Nevada, case counts increased from a ten-week low of 21 new cases per 100,000 population in MMWR week 47 to 41 new cases per 100,000 population in MMWR week 51, and then decreased to 37 new cases per 100,000 population in MMWR week 1.

Figure 2. Rate of New Cases Reported by Age Group and MMWR Week, Washoe County, 2023-2024



- For MMWR week 44 through MMWR week 1, the 65+ age group consistently had the highest case rate.
- For MMWR week 48 through MMWR week 1, the age group with the lowest case rate was the 0-17 age group, except for MMWR week 50 when the 30-49 age group had the lowest case rate.

Figure 3. Rate of New Cases Reported by Race/Ethnicity* and MMWR Week, Washoe County, 2023-2024



*Note: From MMWR week 44 to MMWR week 1, 3.5% of cases were recorded as “Declined to answer”, “Multiple”, “Other”, or “Unknown” and rates per 100,000 population are unable to be calculated for those categories.

- In MMWR week 1, those who identified as Black, Non-Hispanic had the highest rate of new cases with 45 new cases per 100,000 population.
- In MMWR week 41, those who identified as American Indian/Alaska Native, Non-Hispanic had the lowest rate of new cases per 100,000 population with 0 new cases per 100,000 population.

Hospitalizations, ICU Status, & Deaths

COVID-19 hospitalizations are defined as those hospitalized for greater than or equal to 24 hours and have a positive SARS-CoV-2 laboratory test.

As of July 1, 2023, COVID-19-associated deaths include cases investigated for a confirmed SARS-CoV-2 infection and determined that COVID-19 was the cause of death or COVID-19 contributed to the cause of death and/or is specified on the death certificate as a cause of death. See current and previous full definitions in Glossary/Key Terms at the end of the report.

Table 1. Number and Percent of New Cases Reported by Age and Hospitalization Status, MMWR Weeks* 48 through 1, Washoe County, 2023-2024

			Age Group				
			0-17	18-29	30-49	50-64	65+
MMWR Week	48	Total Cases	21	25	43	47	55
		% Hospitalized	4.8%	0.0%	9.3%	8.5%	32.7%
	49	Total Cases	21	32	39	37	43
		% Hospitalized	14.3%	6.3%	2.6%	2.7%	30.2%
	50	Total Cases	44	36	43	41	51
		% Hospitalized	13.6%	0.0%	4.7%	7.3%	23.5%
	51	Total Cases	22	27	64	53	71
		% Hospitalized	9.1%	3.7%	6.3%	7.5%	21.1%
	52	Total Cases	28	35	62	48	74
		% Hospitalized	7.1%	5.7%	8.1%	6.3%	31.1%
	1	Total Cases	24	29	54	45	57
		% Hospitalized	4.2%	3.4%	1.9%	8.9%	24.6%

*Note: hospitalization totals for each week are subject to change as new reports are received on a daily basis and are often delayed, causing underreporting in more recent MMWR weeks.

- During MMWR weeks 48 through 44 the age group with the highest percentage of total cases resulting in hospitalization was the 65+ age group, with a high of 32.7% of cases hospitalized in MMWR week 48.

Table 2. Number and Percentage of Cases Reported by Hospitalization and ICU Status by MMWR Week*, Washoe County, 2023-2024

MMWR Week	New Cases	Hospitalized		ICU	
		#	%	#	%
44	207	22	10.6	2	1.0
45	237	24	10.1	2	0.8
46	212	21	9.9	4	1.9
47	162	18	11.1	2	1.2
48	191	27	14.1	4	2.1
49	172	20	11.6	3	1.7
50	215	23	10.7	2	0.9
51	237	26	11.0	2	0.8
52	247	35	14.2	3	1.2
1	209	21	10.0	1	0.5

*Note: hospitalization and ICU totals for each week are subject to change as new reports are received on a daily basis and are often delayed, causing underreporting in more recent MMWR weeks.

Table 3. COVID-19 Deaths by Age Group and Time Period* of Death, Washoe County, 2020-2023

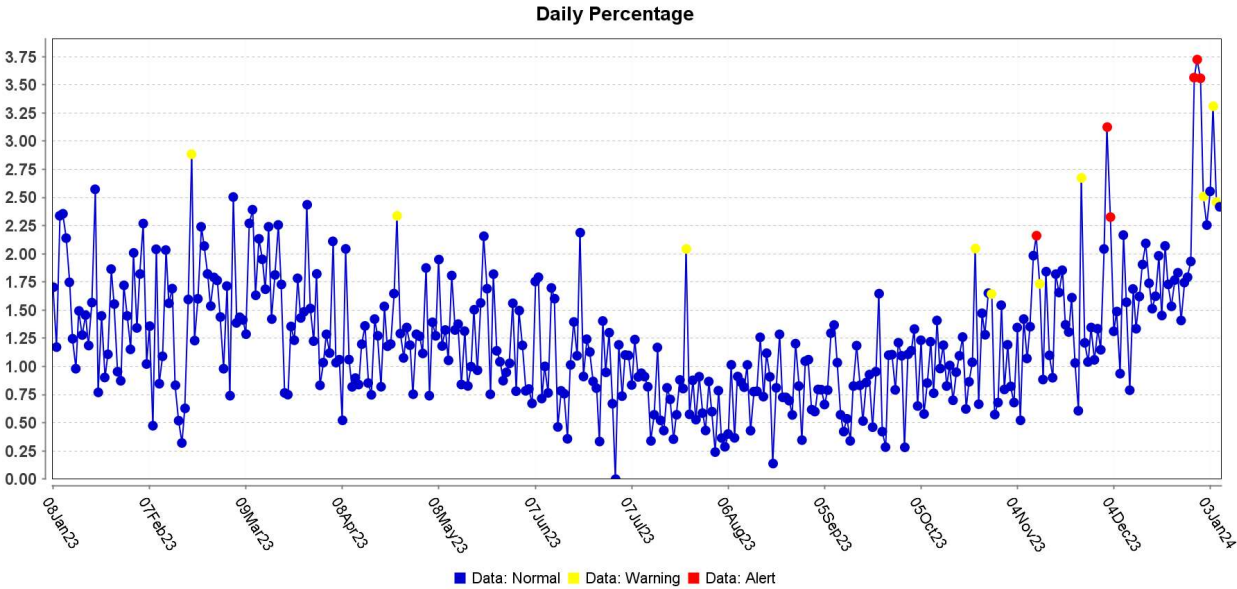
Time Period	Total Deaths	0-17 years	18-29 years	30-49 years	50-64 years	65+ years
2020 March - December	510	1	2	31	86	390
2021 Total	566	2	6	61	128	369
2022 Total	266	0	2	14	37	213
2023 January	6	0	0	0	1	5
2023 February	8	0	0	0	2	6
2023 March	8	0	0	0	0	8
2023 April	5	0	0	0	0	5
2023 May	2	0	0	0	0	2
2023 June	2	0	0	0	0	2
2023 July	0	0	0	0	0	0
2023 August	4	0	0	0	0	4
2023 September	10	0	0	3	0	7
2023 October	6	0	0	1	0	5
2023 November	12	0	0	0	2	10
2023 December	6	0	0	0	1	5

*Note: death totals are subject to change as new reports are received on a daily basis and are often delayed, causing underreporting in more recent months.

Surveillance Data

The percentage of persons indicating COVID-19 as the reason for visit to the Emergency Room (ER) is presented in Figure 4. The overlay below depicts COVID-19 in blue. Alerts appear as yellow and/or red dots. They indicate an unusually high percentage of COVID-19 visits according to ESSENCE algorithms.

Figure 4. Percentage of ER Visits Due to COVID in the Last Year, Washoe County



Data source: ESSENCE

Glossary/Key Terms

Data

Unless otherwise noted, data in this report are based on symptom onset date (when available or applicable), otherwise sample collection date is used. The Nevada State Demographer's data were used for population and demographics for Washoe County throughout this report.

COVID-19 Case

Coronavirus Disease 2019 (COVID-19) cases counted in this document are confirmed or probable cases as determined by meeting confirmatory laboratory evidence, clinical criteria, and/or epidemiologic linkage as defined on the CDC website here:

<https://ndc.services.cdc.gov/case-definitions/coronavirus-disease-2019-2021/>

COVID-19 Hospitalization

COVID-19 hospitalizations are counted as those hospitalized for greater than or equal to 24 hours and have a positive SARS-CoV-2 laboratory test.

As of October 2022, this includes any patient with a positive result on a SARS-CoV-2 laboratory test collected from 14 days before through three days after hospital admission.

- (<https://preparedness.cste.org/wp-content/uploads/2022/10/Interim-CSTE-Guidance-for-COVID-Hospitalization.pdf>)

COVID-19 Death

As of January 1, 2022, both Confirmed and Probable COVID-19-associated deaths are included in the count.

- (https://cdn.ymaws.com/www.cste.org/resource/resmgr/pdfs/pdfs2/20211222_interim-guidance.pdf)

Criteria for confirmed case death:

- The case meets the confirmed COVID-19 surveillance case definition, AND at least ONE of the following criteria is met:
- A case investigation determined that COVID-19 was the cause of death or contributed to the death.
- The death certificate indicates COVID-19 or an equivalent term as one of the causes of death, regardless of the time elapsed since specimen collection of the confirmatory laboratory test used to define the case.
- The death occurred within (and including) 30 days of specimen collection for the confirmatory laboratory test used to define the case and was due to natural causes (e.g., the Manner of Death is coded as "natural" on the death certificate.)

Criteria for probable case death:

- The case meets the probable COVID-19 case definition AND a case investigation determined that COVID-19 was the cause of death or contributed to the death; **OR**
- The case meets the probable COVID-19 surveillance case definition based on presumptive laboratory evidence AND death occurred within (and including) 30 days of specimen collection and was due to natural causes (e.g., the Manner of Death is coded as “natural” on the death certificate.); **OR**
- The case meets the probable COVID-19 surveillance case definition based on epidemiologic linkage and meeting clinical criteria, AND death occurred within (and including) 30 days of symptom onset and was due to natural causes (e.g., the Manner of Death is coded as “natural” on the death certificate.); **OR**
- The case meets the probable COVID-19 surveillance case definition based only on vital records criteria (i.e., a death certificate that lists COVID-19 disease or SARS-CoV-2 or an equivalent term as an underlying cause of death or a significant condition contributing to death and there is no confirmatory or presumptive laboratory evidence.)

As of July 1, 2023, in alignment with the CSTE laboratory criteria used to classify cases, COVID-19-associated deaths include:

- A case investigation for a confirmed SARS-CoV-2 infection determined that COVID-19 was the cause of death or contributed to the cause of death; **AND/OR**
- The death certificate lists a specific COVID-19 ICD code.

The previously used confirmed, probable, and suspected death classifications are discontinued.

Links

NNPH COVID Dashboard

<https://washoe.maps.arcgis.com/apps/dashboards/0db36fa8fa9c47758bc38210e4c23818>

NNPH website for COVID information and vaccine appointments

<https://covid19washoe.com/>

CDC COVID Data Tracker <https://covid.cdc.gov/covid-data-tracker/>

Department of Health and Human Services Nevada Division of Public and Behavioral Health (DPBH) Technical Bulletins https://dphh.nv.gov/Resources/Technical_Bulletins-New/

NNPH COVID-19 Surveillance Report 2020-2022 <https://www.nnph.org/programs-and-services/ephp/statistics-surveillance-reports/index.php>

NNPH COVID reports <https://covid19washoe.com/daily-updates/washoe-county-covid-19-data-report/>